

The Appalachian Trail through Massachusetts



Sages Ravine to North Adams
85.4 Miles
June 18 - 24, 2008

The Appalachian Trail through Massachusetts

June 18: Sages Ravine to The Hemlocks Lean-to

June 19: The Hemlocks Lean-to to Tom Leonard Lean-to

June 20: Tom Leonard Lean-to to Shaker Campsite

June 21: Shaker Campsite to Upper Goose Pond Cabin

June 22: Upper Goose Pond Cabin to Kay Wood Lean-to

June 23: Kay Wood Lean-to to Mark Noepel Lean-to

June 24: Mark Noepel Lean-to to North Adams

Flowers of Massachusetts

June 18

Sages Ravine to The Hemlocks Lean-to

6.0 Miles



Dan crossing a creek



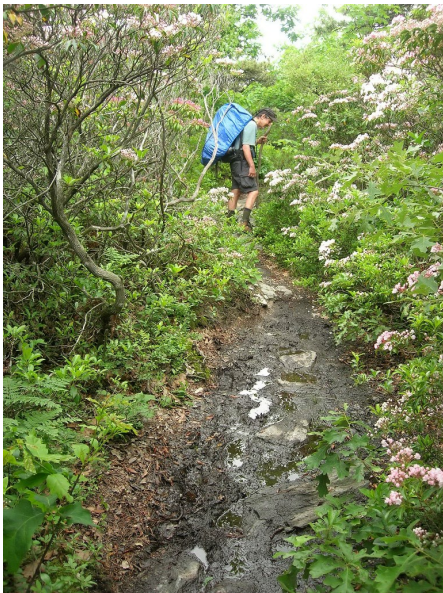
The view south from Race Mountain



The view north from Race Mountain



Lunch on top of Race Mountain



The muddy trail up Mt. Everett



The Hemlocks Lean-to

June 19

The Hemlocks Lean-to to Tom Leonard Lean-to

14.4 Miles



Clouds in the valley from Mt. Bushnell



The view from Jug End



The AT through a meadow below Jug End



The AT through a pine forest



The site of Shay's Rebellion



Looking back at Jug End



The view east from June Mountain



Tom Leonard Lean-to



The view from Tom Leonard Lean-to

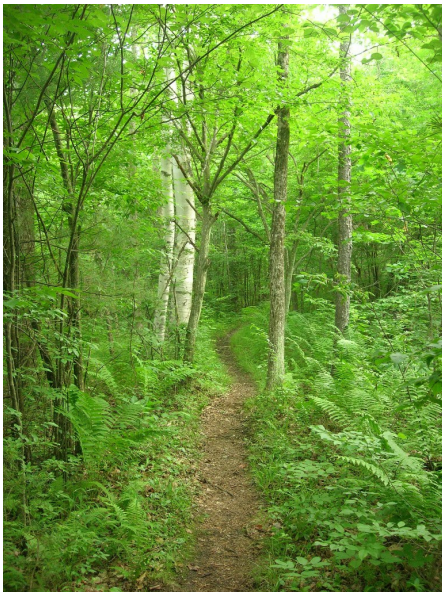
June 20

Tom Leonard Lean-to to Shaker Campsite

11.2 Miles



A pond



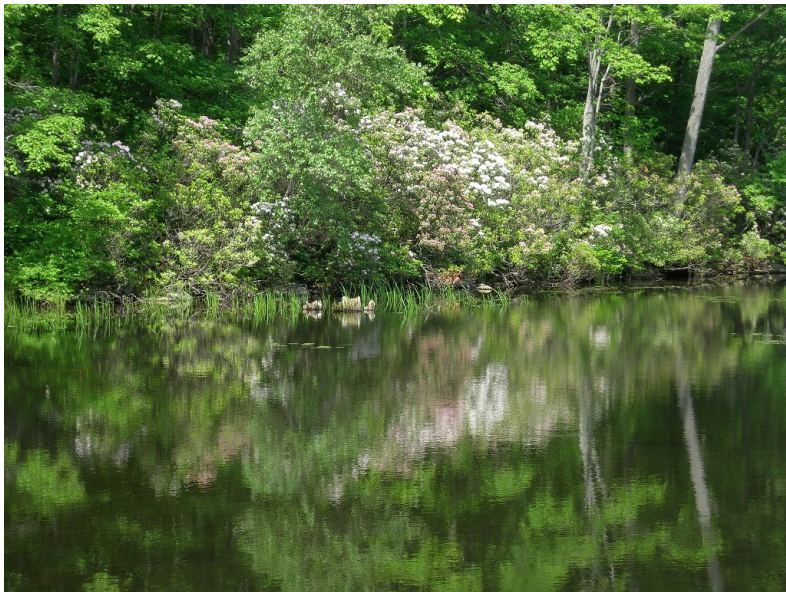
The AT near Muddy Brook



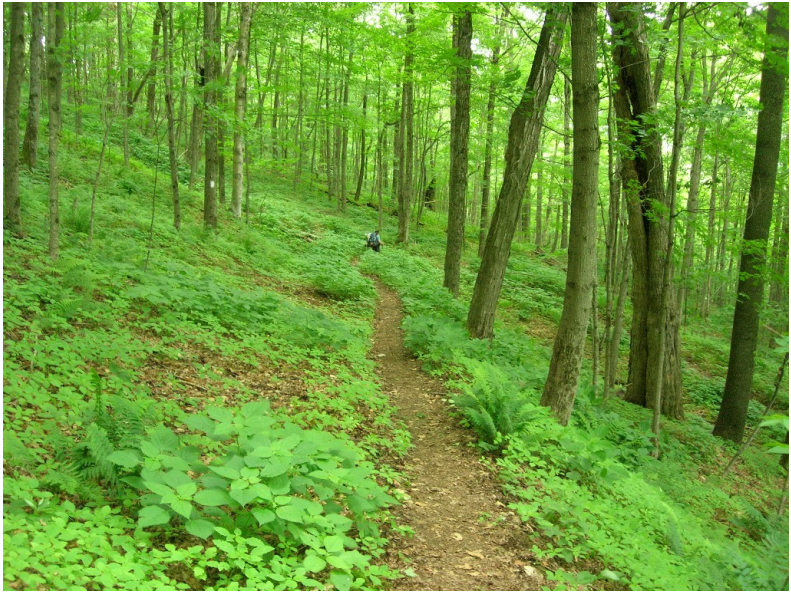
Irises at Benedict Pond



Benedict Pond



Mountain Laurel at Benedict Pond



The trail down to Shaker Campsite



Shaker Campsite

June 21

Shaker Campsite to Upper Goose Pond Cabin

9.9 Miles



The trail near Hop Brook



The view from the trail near Hop Brook



The AT on a boardwalk through a swamp



Upper Goose Pond Cabin



Robb's bunk



Upper Goose Pond



Evening on Upper Goose Pond

June 22

Upper Goose Pond Cabin to Kay Wood Lean-to

17.6 Miles



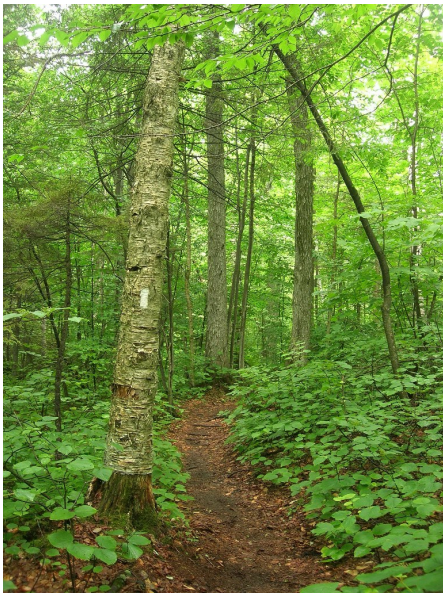
Dan cooking pancakes for everyone at the cabin



Passing over I-90



Finerty Pond



The AT



Kay Wood Lean-to

June 23

Kay Wood Lean-to to Mark Noepel Lean-to

16.7 Miles



Hiking into Dalton



A second, much bigger, breakfast



Colorful fungus



The view west from North Mountain



Interesting rock formations on North Mountain



An ice-cream break at Diane's Twist in Cheshire



Mark Noepel Lean-to on Mt. Greylock



Burro writing in his journal in Mark Noepel Lean-to

June 24

Mark Noepel Lean-to to North Adams

9.6 Miles



The AT on Mount Greylock



The AT to the summit of Mount Greylock



A pond near the summit of Mount Greylock



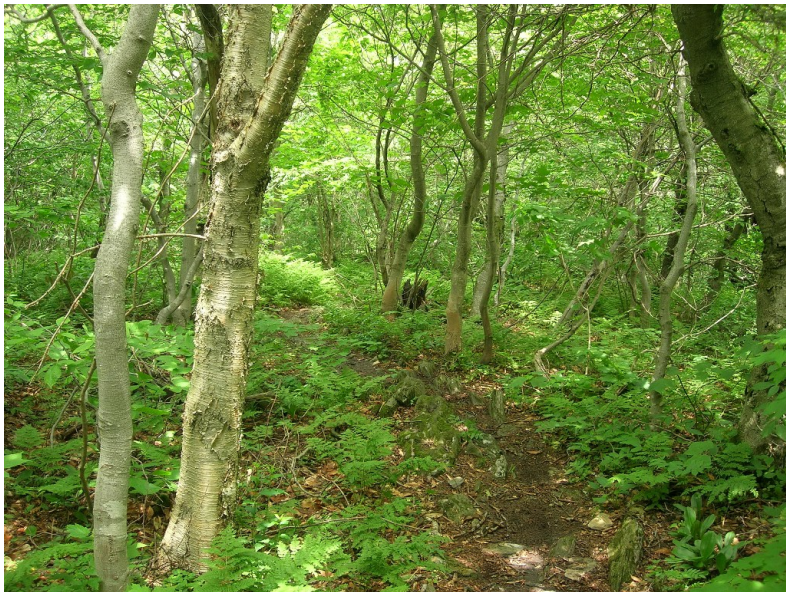
The war memorial on the summit of Mount Greylock



Bascom Lodge



An enclosed pavilion near the summit



The AT on Mt. Fitch



Poncho and Dan



Robb and Dan at the Redwood Motel in North Adams

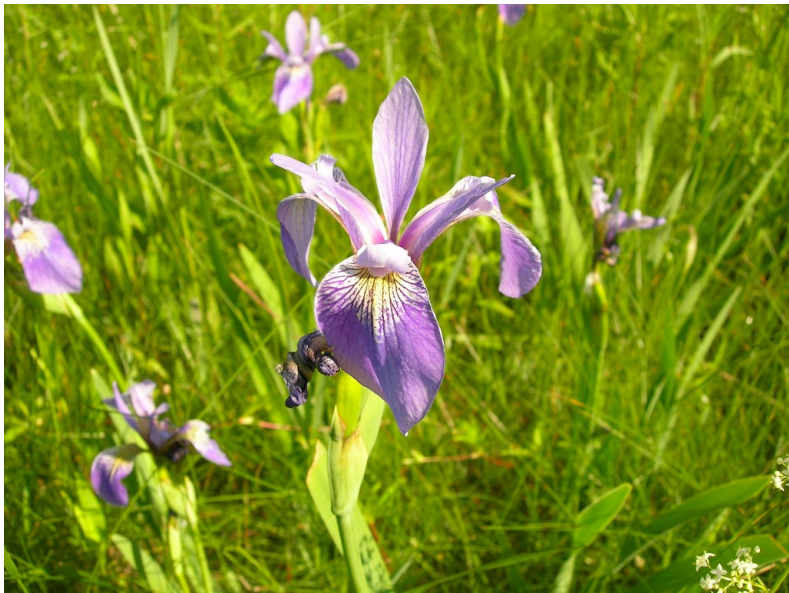
Flowers of Massachusetts



Bunchberry



Deptford Pink



Iris



Iris



Mountain Laurel



Mountain Laurel



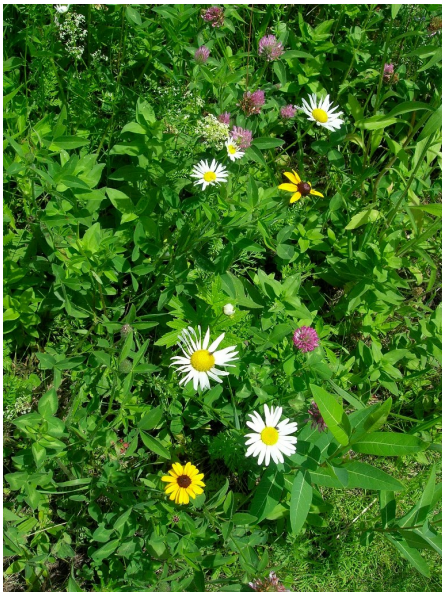
Wild Flowering Raspberry



Flower



Flowers



Mixed flowers



Flower



Flower



Flower



Flowers



Flowers



Flower



Flower



Flower

The End