

The Appalachian Trail in New Hampshire Hanover to Glencliff



July 27 - 31, 2010

The Appalachian Trail in New Hampshire

Hanover to Glenclyff

July 27: Hanover to Velvet Rocks Shelter

July 28: Velvet Rocks Shelter to Moose Mountain Shelter

July 29: Moose Mountain Shelter to the Firewarden's Cabin

July 30: The Firewarden's Cabin to Ore Hill Shelter

July 31: Ore Hill Shelter to Jeffers Brook Shelter

Hanover to Velvet Rocks Shelter

July 27

0.8 Miles



Downtown Hanover



Leaving town



Beginning the hike from the soccer field



The trail up to Velvet Rocks Shelter

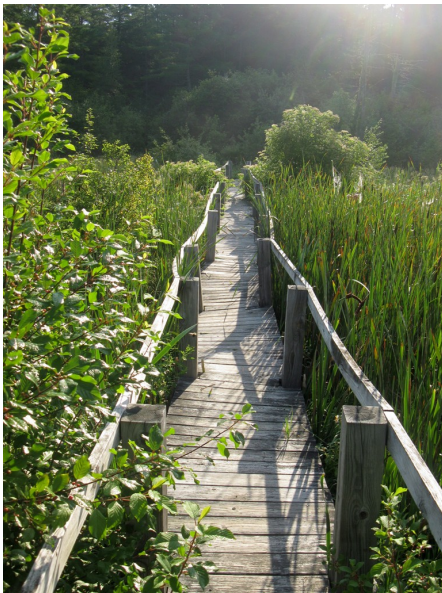


Velvet Rocks Shelter

Velevt Rocks Shelter to Moose Mountain Shelter

July 28

9.5 Miles



A footbridge through a marsh



A cattail marsh



A dewy spiderweb



Flower



Goldenrod



Queen Anne's Lace



Flower



Flower



Mink Brook



Flower



Flower



The sign to Moose Mountain Shelter



Moose Mountain Shelter



The privy at Moose Mountain Shelter

Moose Mountain Shelter to the Firewarden's Cabin

July 29

12.4 Miles



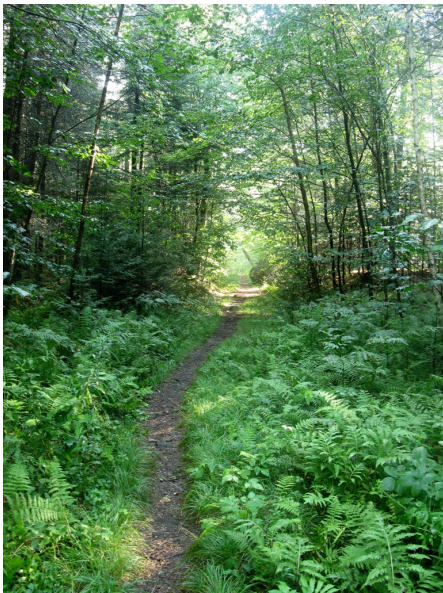
Morning mist on the trail



Mt. Moosilauke in the clouds



A log footbridge



The trail along Moose Mountain



Flowers in beaver pond



Holts Ledge



A marble trail marker



The view from Lambert Ridge



The view from Lambert Ridge



A ladder up Smarts Mountain



Iron rungs up Smarts Mountain



Thru-hiker "Tup" at the Firewarden's Cabin



Mt. Cube from Smarts Mountain



Sunset from Smarts Mountain



Sunset from Smarts Mountain

The Firewarden's Cabin to Ore Hill Shelter

July 30

12.4 Miles



Mud in the trail



South Jacobs Brook



The steep trail up Mt. Cube



The view north from Mt. Cube



Thru-hikers “Bonne Chance” and “Tinklefingers” at Ore Hill Shelter

Ore Hill Shelter to Jeffers Brook Shelter

July 31

8.6 Miles



The trail on Ore Hill



Flower



Flower



Trail sign



A gift for two hikers at Glenclyff



The Hikers Welcome hostel at Glenclyff



Baltimore Jack, a trail legend



Hobblebush



Jeffers Brook



Jeffers Brook



The interior of Jeffers Brook Shelter

The End